

Free Webinar

How to leverage the speed of 5G to build secure and powerful business Internet?



Louis Tao
Business Development
Manager, Europe



Taylor Liao
Senior Field Application
Engineer, Europe



InCloud
Manager



5G



Louis Tao

Business Development Manager,
Europe



Taylor Liao

Senior Field Application Engineer,
Europe

CONTENTS

- 01 Scenarios of Business Internet
- 02 Business Internet Solutions
- 03 Demo: InCloud Manager
- 04 Case Studies
- 05 Q&A

01

Scenarios of Business Internet



Trends of Business Internet

Multi-Cloud Workload

Business increasingly migrated from locally to public or private clouds



Hybrid Workplace

Working locations are being flexible



Business Continuity

Enterprises are seeking resilience of networking



Complex Security

Increasingly complex environments require more for security



| New Technologies of Business Internet



5G

Excellent user experience with high speed, low latency, and better connection



SD-WAN

Flexible and low-cost control of the network by transferring the traffic management burden from physical devices to software



NaaS

Saves time for deploying and maintaining self-owned networking infrastructure



SASE

Secure Access Service Edge. SD-WAN local security features combined with cloud-centric security offer more comprehensive protection

Challenges

01

Access to Internet

- Speedy expansion of chains
- Hybrid offices becoming popular
- Remote work increasingly preferred
- Multiple terminals are interconnected in branch offices

02

Network Stability

- Business increasingly managed in the cloud
- Critical applications
- Applications for remote working

03

IT Unified Management

- Quick and mass deployment
- Quick troubleshooting
- Unified IT strategies
- Traffic priorities to critical business and applications
- Greater efficiency

04

Wireless Network Services

- Customer Wi-Fi in stores
- Office employees connecting multiple terminals to Wi-Fi

05

Cyber Security

- Network security in hybrid offices
- Complexity in wireless networks
- Sensitive data (e.g. transactions)
- Remote access to intranet resources

06

IT Costs

- Demand for more flexible networking solutions
- Cost of broadband and dedicated lines
- Costs of network deployment and maintenance

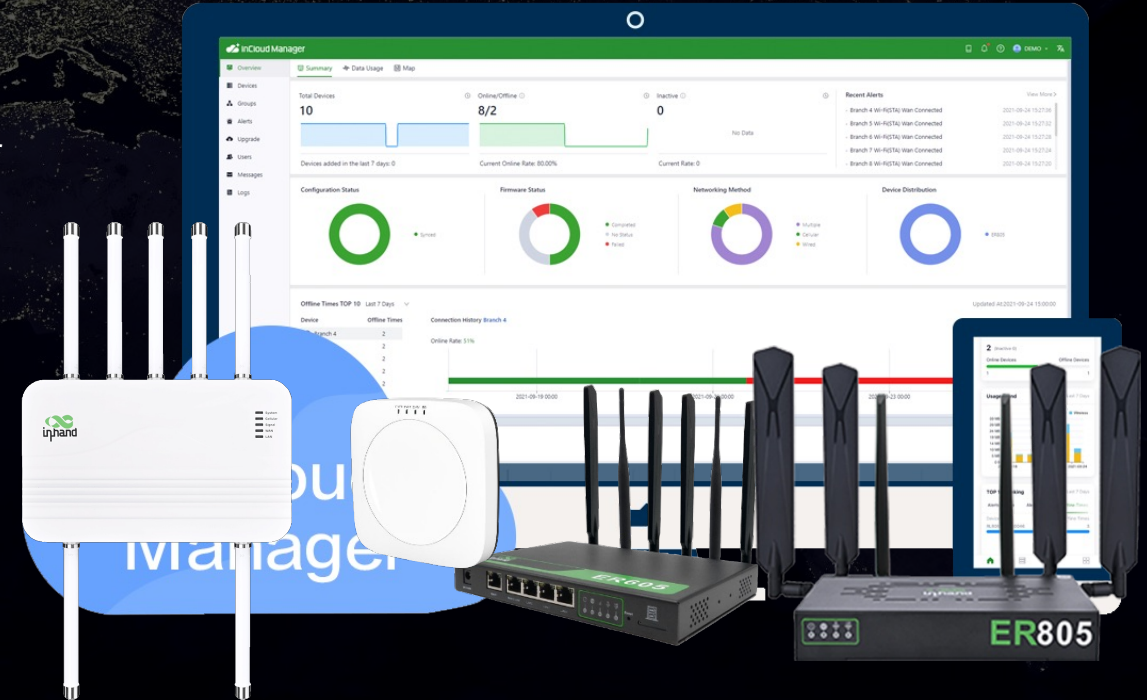
02

Business Internet Solutions



Cloud-Managed Networking Solution

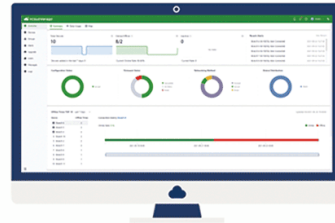
The **InHand Cloud-Managed Networking Solution**, including edge routers, Wi-Fi AP, 5G outdoor unit, and InCloud Manager SaaS, offers fast, secure, simple, and convenient networking services, creates unlimited possibilities for business growth.



- ✓ Cloud-Managed
- ✓ IT Improved
- ✓ Deployment Simplified
- ✓ Experience Optimized

Cloud-Managed Networking Solution

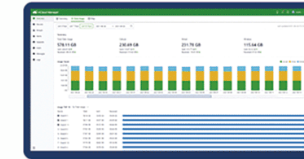

InCloud Manager
Visualized Cloud



Full Lifecycle



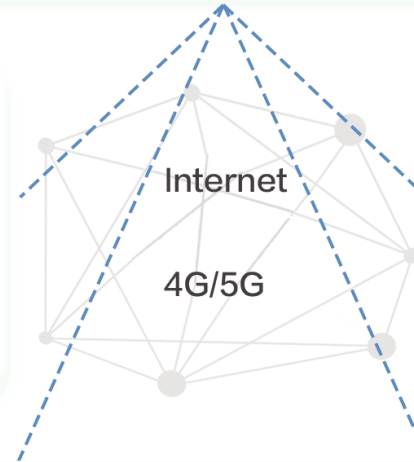
Network Visualization



Application Insights

Store Branches

4G/5G cellular networks
Link failover
High performance
Network fault diagnostics
Zero-touch deployment
Centralized management



Enterprise

SD-WAN
Network security
Traffic & data analysis
Network visualization
Intelligent operation
Unified management



Hardware



5G Outdoor Unit



ER605
5G Edge Router



ER805
5G Edge Router



Wi-Fi 6 AP

Coming soon

| Six Core Values, One-Stop Management

Flexible Access Network

Convenient network, and multiple networking methods, enabling the digital store business.

High Availability

Worry-free network experience,
Stable network for the digital business escort.

SD-WAN

Intelligent link, real-time detection of network quality, rapid inter-branch networking.

IT Unified Management

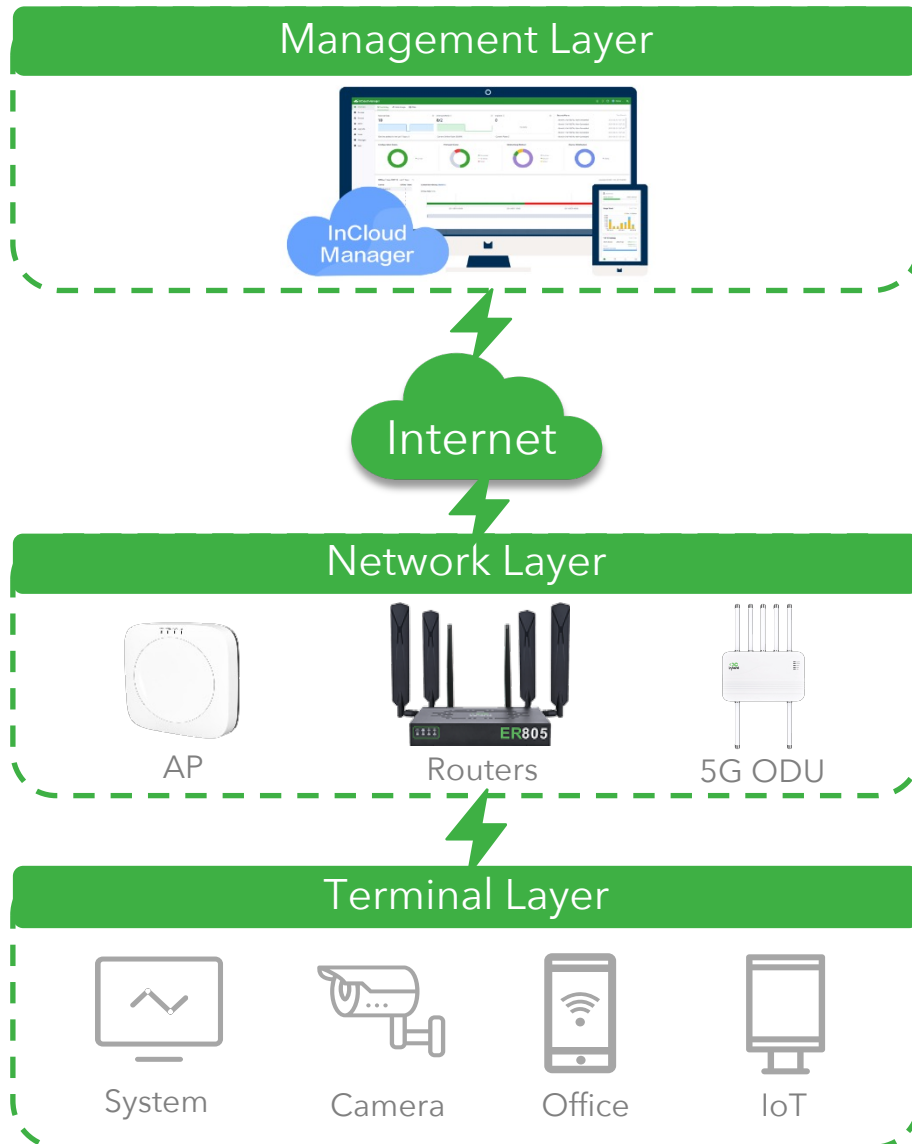
Visual and centralized portal, support business development always and everywhere.

Wireless Network Services

Manageable visitor network,
Improve the customers experience.

Reduced Cost

Refined NetOps, and new SD-WAN technology enhance the IT efficiency and reduce cost.



Challenge: With varying scenarios of business branches and increasing demand for connectivity, how to ensure Internet access?

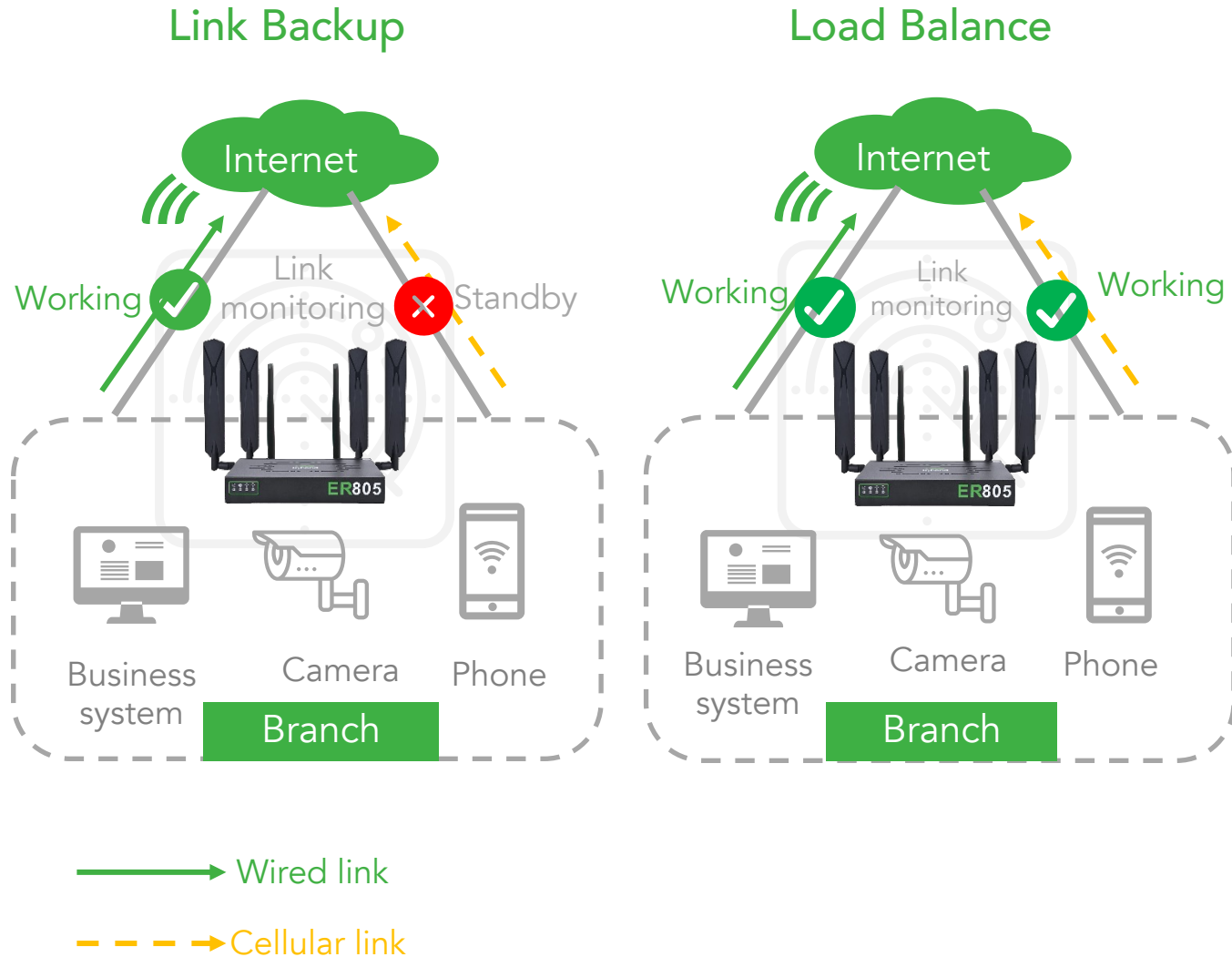
Highly cost-effective networking equipment

- Multiple devices for varying branch sizes
- Available concurrently with wired, cellular and Wi-Fi
- Flexibly adaptable to various scenarios

Zero-touch Deployment

- Cloud-based integrated design: easy deployment, lower costs, faster expansion
- Efficient deployment: simplified operations, reduced costs
- Easier collaboration: offline configuration, smooth IT/OT collaboration

Network Availability

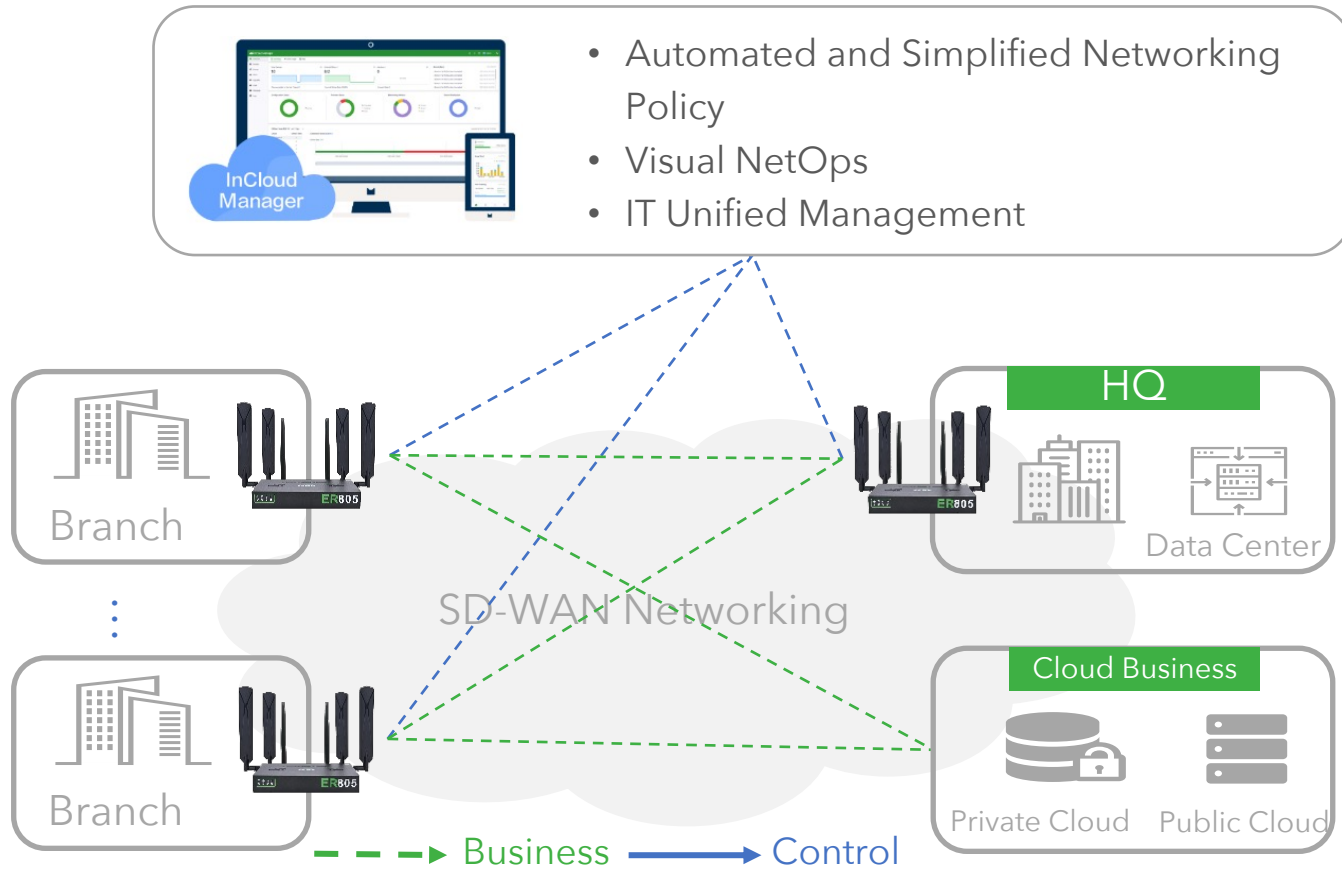


Challenge: How to maintain network stability and ensure critical business?

Highly available "always on" redundant links

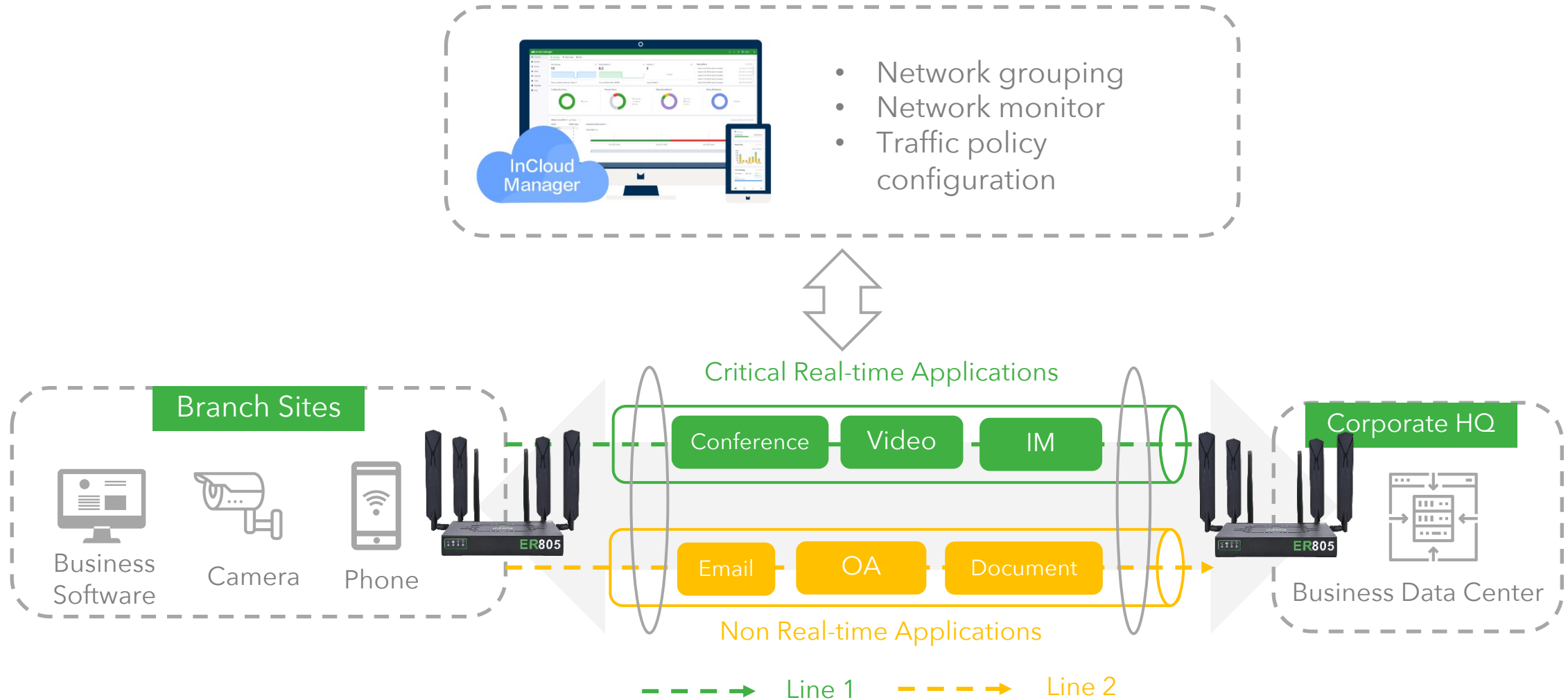
- Load balance on multiple WANs
- Failover between wired WAN and 5G
- Flexible QoS and Access Control List
- Source IP routing policy
- MAC address filtering

| SD-WAN, smarter network management



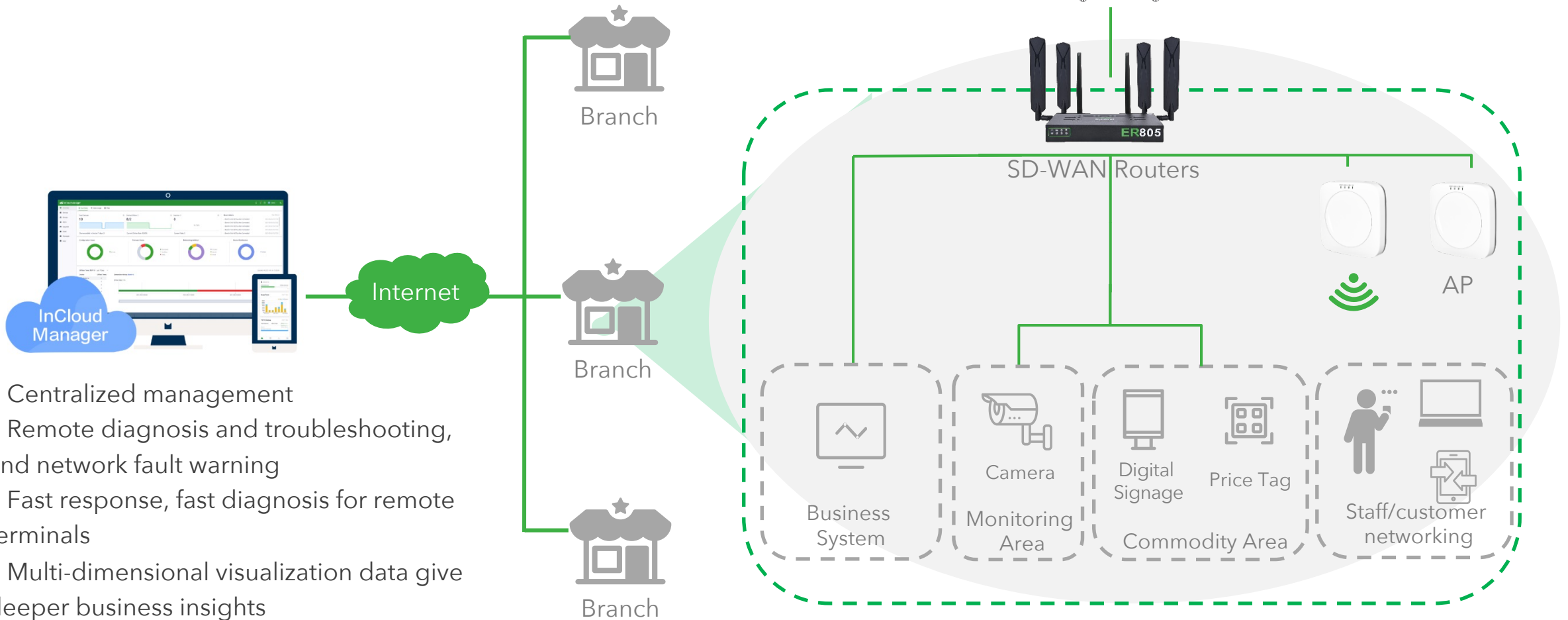
- Available with **wired, cellular, and wireless links**, seamless link switching, automatic failover
- **Multi-dimensional data visualization** for network insight and efficiency
- Simplified and efficient branch connectivity **without network expertise**, quick and easy network setup

| SD-WAN, smarter network management



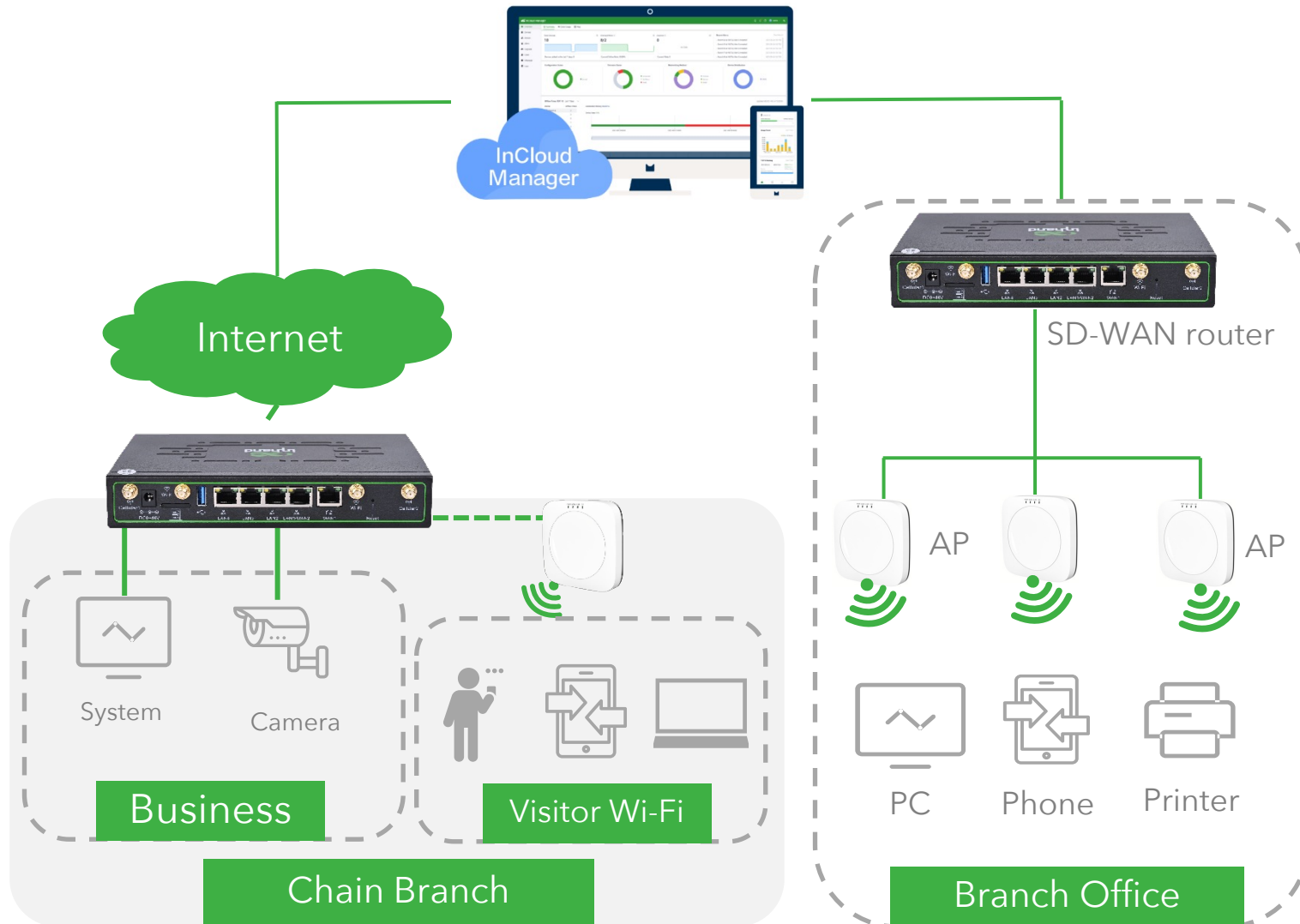
IT Unified Management

Challenge: How to improve efficiency with centralized management?



- Centralized management
- Remote diagnosis and troubleshooting, and network fault warning
- Fast response, fast diagnosis for remote terminals
- Multi-dimensional visualization data give deeper business insights

Wireless Network Services



Challenge: How to build more powerful Wi-Fi and connect more devices?

Excellent Wi-Fi network service: AP & Routers

- Powerful dual-band gigabit Wi-Fi 5/6 coverage
- Seamless Wi-Fi roaming
- Wi-Fi encryption and authentication

Unified Wi-Fi network managed by InCloud Manager

- Unified portal Service authentication
- Visitor information collection
- Wi-Fi hotspot visualization (on roadmap)

| Reduced IT Costs



Deployment Costs

- Plug-and-play devices, a cloud-hosted platform
- Automated network architecture, no need to change existing networks



NetOps Costs

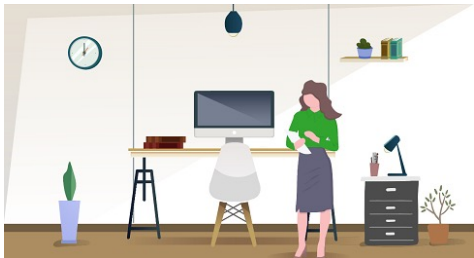
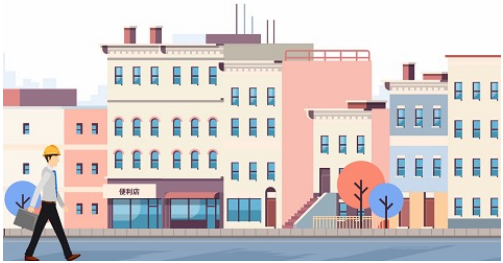
- Distributed sites centralized managed in the cloud, reducing travel costs
- Visualized interface improves network management efficiency
- Easier troubleshooting reduces maintenance costs



Internet Fees

- Cost-effective traffic charges
- Cost-effective network devices

Cloud-Managed 5G SD-WAN Edge Routers



ER805

For medium-sized branches:

Access capacity:

- Firewall throughput: 600M bps
- VPN throughput: 200Mbps
- User access volume: 100-150

Networking capabilities:

- 5G/4G
- 5 * Gigabit Ethernet
- Wi-Fi 5, dual-band Gigabit



ER605

For smaller sized branches:

Access capacity:

- Firewall throughput: 450M bps
- VPN throughput: 100Mbps
- User access volume: 50 to 100

Networking capabilities:

- 5G/4G Cellular
- 5 * Gigabit Ethernet
- Wi-Fi 5, dual-band Gigabit

| 5G Outdoor Unit



High performance 5G/4G

DL : 4.76Gbps , UL: 1.25Gbps



Throughput: 2 Gbps

Number of access users: 200



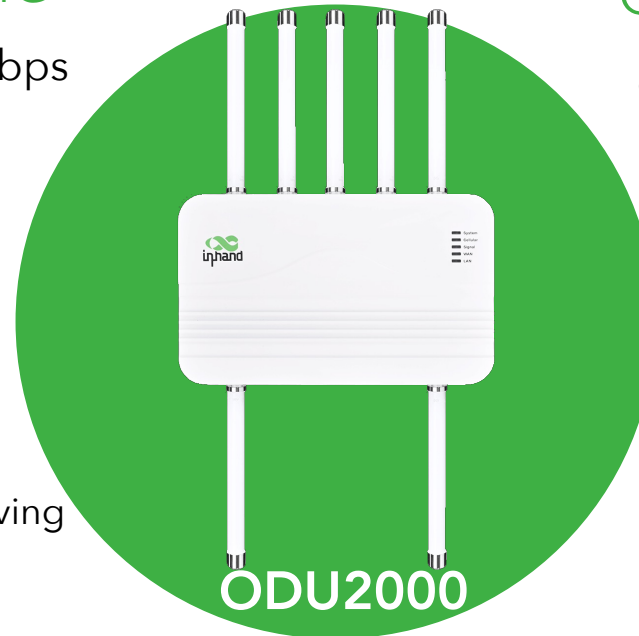
2.5G Gigabit Ethernet

WAN/LAN , support PoE power receiving



Security Features

Firewall, DOS attack prevention, remote access control



Omnidirectional Antenna

6 external 5G cellular antenna design



Adapt to Harsh Outdoor Environments

IP67 , -30 ~ 70 degrees, die-casting aluminum shell, GPS



Wall-mounted, Pole-mounted

Adjustable installation angle



Cloud Management

Simplified and completely cloud-based management



InCloud Manager SaaS

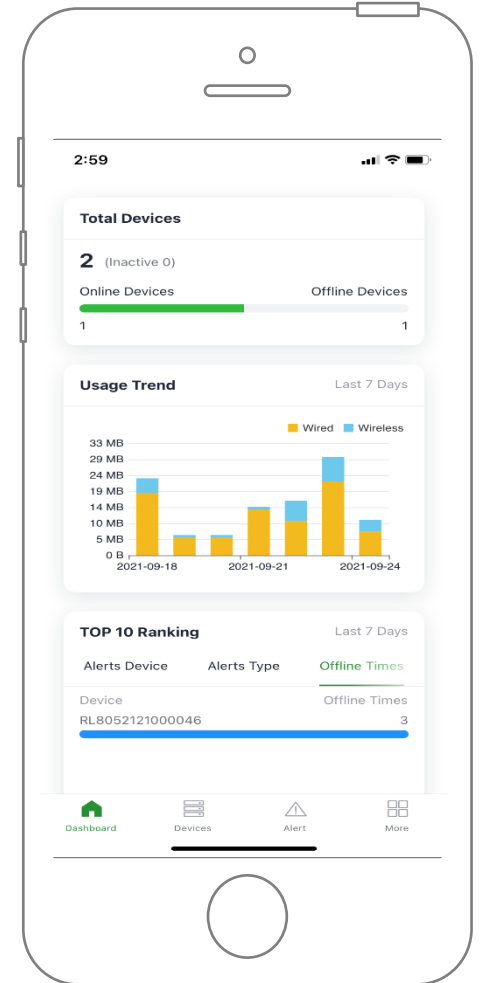
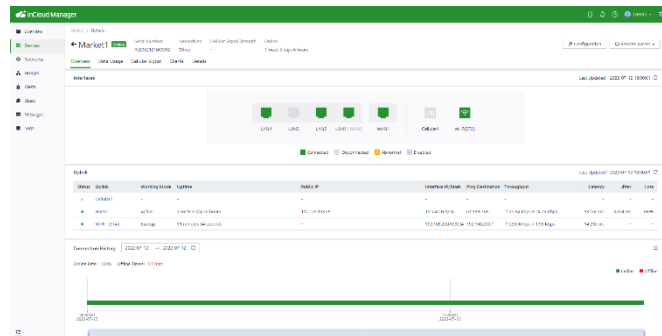
One-Stop devices, networks, and applications management portal



Simplify your deployment and network management

Improve your network access experience

Data visualization for better business analysis



03

Demo: InCloud Manager



01 Remote Monitoring

02 Remote Management

03 Networking Features

| InCloud Manager Demo – Remote Monitoring

Overview

- Visual global summary information
- Rich graphs

Network Monitoring

- Link information & quality
- Network quality
- Traffic status

Device Details

- Basic information
- License information
- Firmware and cellular module information
- Geolocation

Alerts

- Device reboot
- Cellular traffic threshold
- InCloud connection
- Link abnormal status
- SIM switch

Upgrade Firmware Remotely

- Batch upgrade
- Group upgrade
- Schedule an upgrade

Configure Remotely

- User-friendly GUI interface
- Web GUI configuration without complex command lines
- Batch configure
- Group configure

Account Management

- Multi-level organizations
- 4 user roles
- Internal and external accounts
- MFA: SMS, authenticator APP

Cloud Connector

- Access to remote terminals to make maintenance, download programs and collect data
- Secure and stable channel based on OpenVPN

SD-WAN Network

- Interconnect branch business systems
- Simple configurations without professional network knowledge

Policy Routing & Traffic Shaping

- Multi-policy traffic shaping and policy routing ensures critical service networks are prioritized

Case Studies



| Large Supermarket Chains

Background



North America



Thousands of stores



Cellular backup link to existing wired network



Remote maintenance from HQ

Challenges



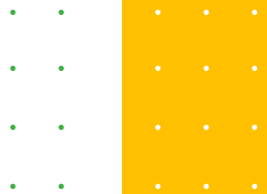
Scattered stores without centralized IT management



Difficulty in changing existing network architecture

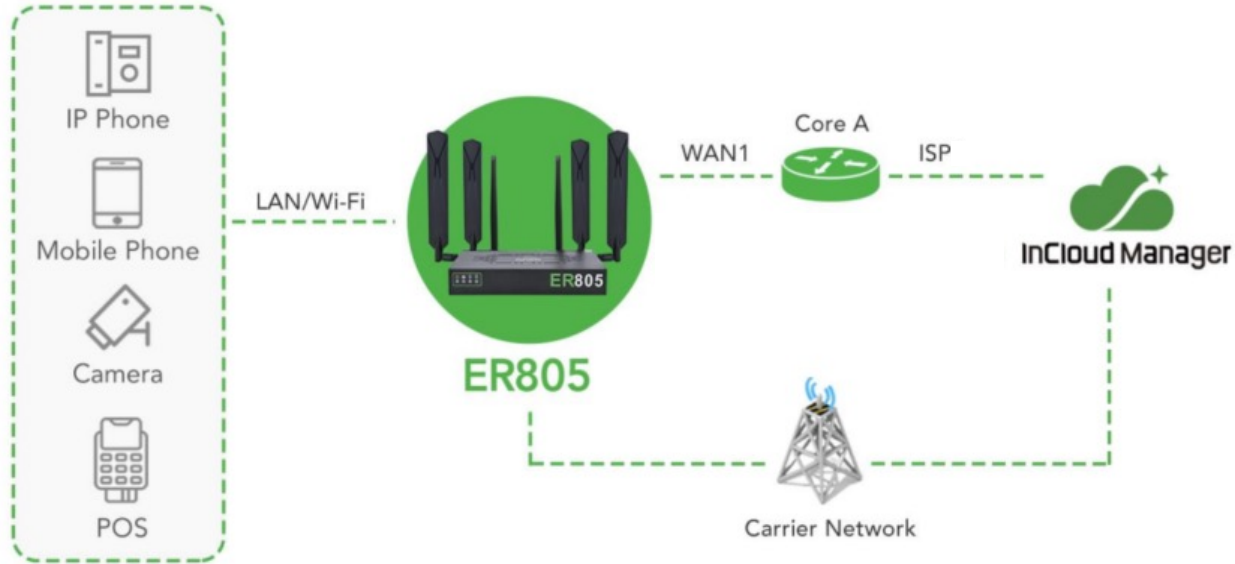


High IT maintenance costs



Large Supermarket Chains

Solution



- Devices in the store are connected to the ER805 through LAN or Wi-Fi
- When the primary wired link fails, the network will immediately switch to the cellular network.
- InCloud Manager provides a remote connection channel for remote access from HQ



Highlights



Easy deployment

Gigabit Ethernet, 5G, and Gigabit Wi-Fi available concurrently, easily integrate into current network, and without changing existing architecture



High availability with 5G backup

High-speed 5G network as economical and convenient backup, making in-store connectivity more reliable



Easy Ops, reduced management costs

Centralized management and cloud connection services help manage on-site networks and devices without travel

| Petrol Pumps

Background



Middle East



100+ stations



Cellular backup link to existing fiber network for huge prospect traffic



Remote monitoring and maintenance

Challenges



Ultra-high demand for fast & reliable connectivity on 100+ stations during FIFA World Cup 2022



Insufficient IT staff for on-site operation and maintenance

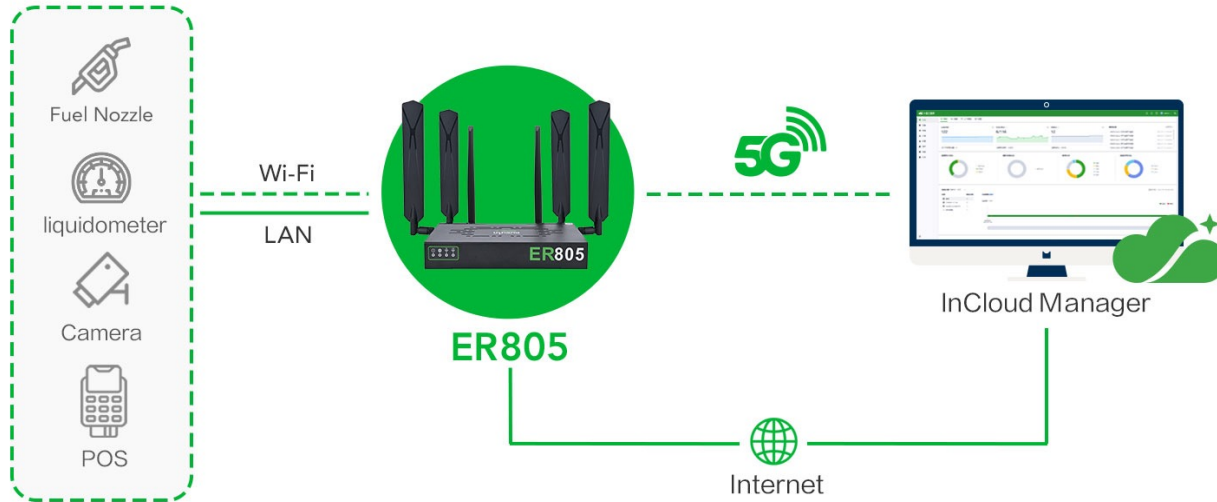


Lack of high bandwidth for remote monitoring



Petrol Pumps

Solution



- Devices in the store are connected to the ER805 through LAN or Wi-Fi
- InCloud Manager provides a remote connection channel for remote access from HQ



Highlights



High speed

Gigabit Ethernet, 5G, and Gigabit Wi-Fi ensure uninterrupted high-speed connectivity



High availability

High-speed 5G network and multiple backup mechanisms make connectivity more reliable



Easy Ops, reduced management costs

Out-of-band management for devices behind the R805 through VPN and



Efficient management

Multi-dimensional visualization interfaces ease management

05

Q & A



Thanks

Contact Us

louis.tao@inhandnetworks.com
taylor.liao@inhandnetworks.com
www.inhandnetworks.com



InCloud
Manager

