



InHand Networks

3650 Concorde Pkwy, Suite 200

Chantilly, VA 20151

USA

T: +1 (703) 348-2988

E: info@inhand.com

www.inhand.com



Business Network

Build Extraordinary Networks for Your Bright Future



InHand Cloud-Managed Networking Solution

Challenges in enterprise networks brought by digital transformation

Connectivity fosters relationships, empowers businesses, and fuels knowledge acquisition. Innovations in technologies bring infinite possibilities for business development, while also introducing multi-dimensional competition and increased uncertainties. Enterprises still face many challenges in connectivity on the path to digital transformation.



Difficulties in deploying massive connectivity

Digitalization and globalization have made networks for corporate offices and branches more complex. Traditional networks struggle to meet the demands for quick deployment and business adaptability.



Challenges in consistent application experience

The modern workplace demands higher network bandwidth and performance. High traffic or link congestion compromises critical business experiences, leading to increased losses.



Inefficiencies in NetOps

As enterprises expand branches across regions, IT operations become increasingly complex and costly. Traditional WAN solutions can't effectively monitor the status of business applications, leading to inefficient network maintenance.



Risks in network security

Distributed sites have diversified access to corporate resources. Remote employees using personal devices and networks to access corporate data are vulnerable to cyberattacks without adequate security measures.

About Us

InHand Networks is a leading IoT solutions provider founded in 2001, dedicated to driving digital transformation across industries and empowering customers to unlock their full potential and achieve accelerated growth.

We specialize in delivering industrial-grade connectivity solutions for diverse sectors, such as enterprise networks, industrial and building IoT, digital energy, smart commerce, and mobility. Our comprehensive product portfolio and services cater to various applications worldwide, including smart manufacturing, smart grid, intelligent transportation, smart retail, etc. With a global footprint spanning over 60 countries, we serve customers in China, the United States, France, Germany, the United Kingdom, Italy, and beyond.



Solution Values

To address the challenges of traditional enterprise networks in deployment, management, and access experience, InHand launches the **Cloud-Managed Networking Solution**. This solution offers comprehensive network connectivity for enterprise branches, retail stores, and more by enabling agile, scalable, and centralized network management capabilities.



Highly available networks

We integrate wired, cellular, and Wi-Fi connectivity, enabling redundancy and failover systems to minimize single points of failure.



Redefine the way IT is managed

We provide a centralized platform to streamline your network management and enable IT personnel to monitor the network anytime, anywhere.



Improve network agility and continuity

The solution helps to gain agile responses to specific needs for each site with our plug-and-play devices and clouds to maintain productivity.



Enhance cyber security

Our solution facilitates agile responses to threats across networks, applications, endpoints, and clouds, enhancing protection with data encryption transmission, multi-factor identity authentication, and role-based access control.



InHand Cloud-Managed Networking Solution

InHand business networking solution encompasses cloud-managed edge routers, Wi-Fi access points, switches, 5G FWA/ODU cellular routers, and the InCloud Manager SaaS platform. By integrating top-tier IT management, IoT, 5G, and AI technologies, we provide fast, secure, and user-friendly network solutions globally, enabling businesses to unlock boundless growth opportunities.



Our Capabilities

Excellent Network

- 5G SA/NSA
- Wi-Fi6 / Wi-Fi7
- Gigabit Ethernet
- Firewall Security

Visualized Insight

- Network Status & Quality
- Cellular Signal & Traffic Graphs
- Clients Experience & Topology
- Remote Control & Alerts

Multi-site Networking

- SD-WAN
- OOBM
- IPSec VPN / Open VPN
- Traffic Shaping

AI-Powered Network

- AI Configuration
- AI Troubleshooting
- AI Log Analysis
- 24/7 AI Assistant

InCloud Manager

AI-Powered Network Management Cloud

1 Easily scale at your own pace

- + Deploy thousands of networks quickly with cloud configuration and automated orchestration to easily scale your network up.
- + Tailor unique configurations to meet the specific needs of each location.
- + Ensure all locations adhere to corporate standards.

2 AI-Driven operation improves your overall IT efficiency

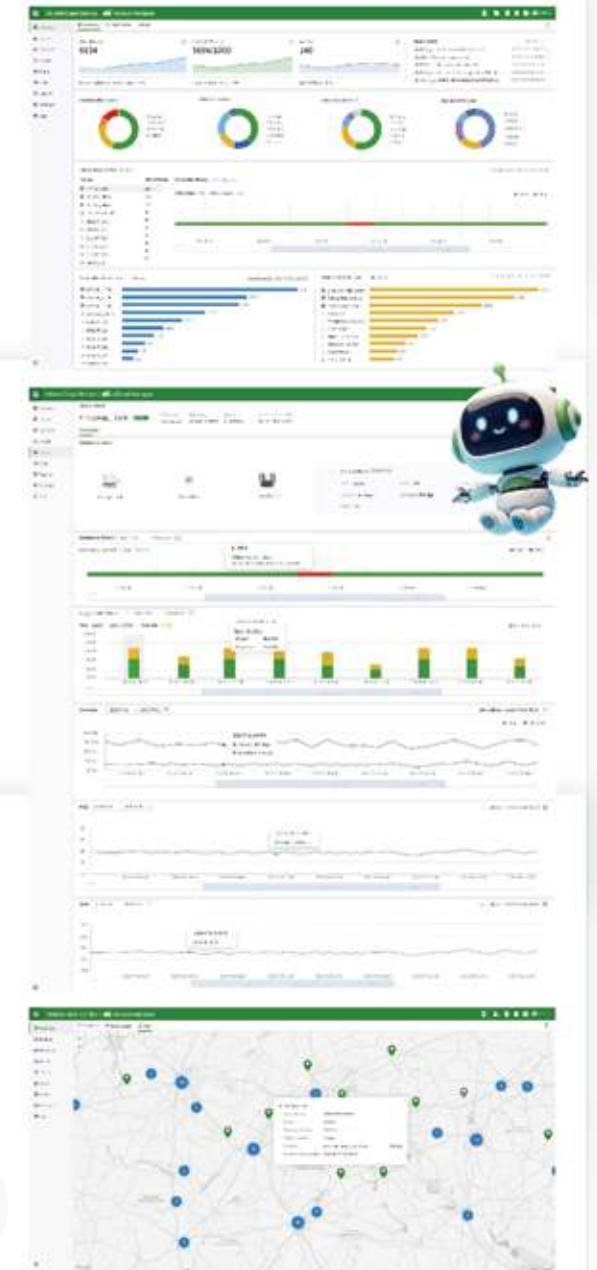
- + Zero-touch provisioning for plug-and-play devices to reduce workload.
- + Intent-based configuration to simplify network orchestration and complexity.
- + AI-Powered control on thousands of distributed sites across regions.

3 Remote Control for Your On-site Terminals

- + Virtualized networking technology ensures no access conflict for distributed sites.
- + Easily build remote access tunnels without modifying local network architecture.
- + Out-of-band management of distributed devices like POS, VoIP, servers, IP cameras, and any other clients over Ethernet.

4 Manage and Monitor from Anywhere

- + Monitor WAN, access, and IoT technologies with end-to-end visibility all in **InCloud Manager**, empowering flexibility for teams.
- + Visualize network performance, traffic patterns, and device health for valuable insights to optimize the network.



InHand provides an end-to-end solution with a versatile and comprehensive product portfolio that is scalable and adaptable to various industries and applications.

Application 1

A one-stop solution for hybrid networking



Application Scenarios



Edge Routers

Cloud-managed Branch Routers

NEW

ER815
High-performance Branch Router

- 5G
- 2.5G Ethernet
- Wi-Fi 6
- Network Security

ER605
Cost-effective Branch Router

- 4G CAT 6
- Gigabit Ethernet
- Gigabit Wi-Fi
- Link Backup

ER2000
High-performance Enterprise Router

- 10G SFP+
- 10G Ethernet
- PoE
- Network Security
- 1U Rack-mounted

LAN Products

Cloud-Managed Network

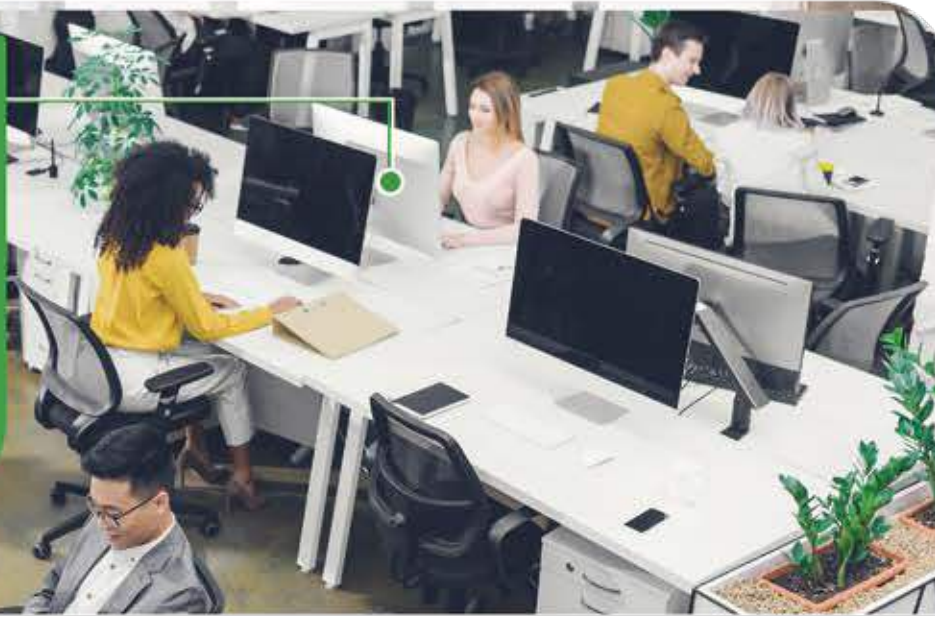
ES220

Unmanaged Switches

PoE 5 Ports / 8 Ports

Full Gigabit Ethernet

Sturdy Metal Design



ES620

Cloud-managed Switch

4*Combo Ports 24* PoE Ports

56Gbps Switching Capacity

Cloud-Managed



EAP600

Cost-effective Wi-Fi 6 AP

Wi-Fi 6 Wi-Fi Portal

Mesh Networking

Network Security



Application 2

Added-value 5G, especially for connectivity extension to outdoor

ODU2012
Outdoor 5G Wi-Fi7 Router

- 5G SA/NSA, DL 7.01 Gbps, UL 2.5 Gbps
- Outdoor IP67 Protection
- IPsec VPN, L2TP VPN, Firewall Security
- 2*2.5 GbE WAN/LAN

Application Scenarios

Harbor Dock
Quality communications for improved dock operations

Sports Training
Exploring full potential through continuous connectivity

Outdoor Restaurant
Reliable network delivers fantastic customer experience

Oil Field
Reliable connectivity in harsh environments

Application 3

Fixed wireless Internet for SMB connectivity with convenience



CR602
5G Wi-Fi7 Router

- 5G
- Wi-Fi 6
- Gigabit Ethernet
- Network Security



FWA12
5G Wi-Fi7 Indoor Router

- IPsec VPN, Firewall Security
- Wi-Fi7 BE4200
- Carrier Aggregation
- 5G R16, DL 7.01 Gbps, UL 2.5 Gbps



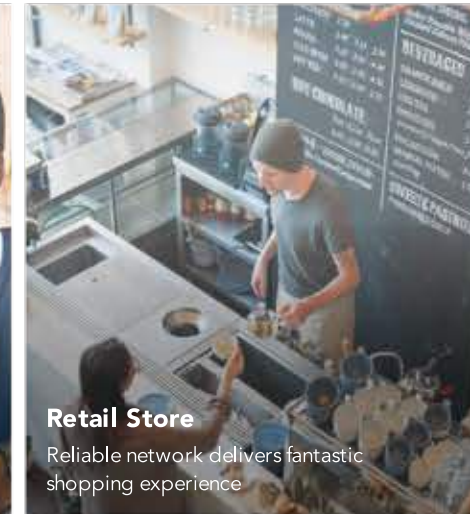
CPE02
5G Wi-Fi6 Indoor CPE

- 5G R16, DL 3.4Gbps, UL 1Gbps
- Wi-Fi6 AX5400, 128 Clients
- 1*2.5GbE WAN, 1*GbE LAN

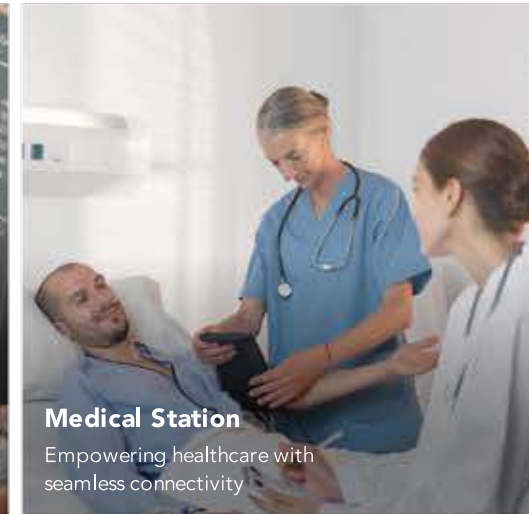
Application Scenarios



Rural School
Inspiring learning through seamless connections



Retail Store
Reliable network delivers fantastic shopping experience



Medical Station
Empowering healthcare with seamless connectivity



Government Agency
Building a connected future for public service



Enterprise Office
Instant access makes business operate swiftly



Public Safety
Secure connections for safer communities

Application 4

Instant connectivity for pop-up network access with plug-and-play

CR202
Portable Cellular Router with Battery

- Portable 4G Router
- Plug-and-Play
- Battery Power Supply for 8 Hours

Application Scenarios

Business Travel
Experience the freedom to connect with no business boundaries

Mobile Retailer
Elevating outdoor experience with seamless commercial service

Camping
Narrowing the distance between friends

Outdoor Live Streaming
Sharing every moment of your wonderful life

Sports Event
Staying connected while exploring the world

RV Travel
Enjoying every moment with the ones you love

5 Major R&D Centers

Rapid Response to Market Demands

Beijing
Chengdu
Jiaxing
Toronto Canada
Virginia USA

2 Major Manufacturing Centers

Supply Chain: Ensured Production Capacity and Quality



2 Manufacturing Centers:
Jiaxing (China)
Toronto (Canada)

15 high-efficiency production lines

11w+ monthly capacity

4 Major Warehousing and Technical Support Centers

Multi-location Warehousing and Technical Support

Toronto Canada
Virginia USA
Dusseldorf Germany
Jiaxing China

Applied in a Wide Range of Scenarios



Smart Manufacturing



Smart Retail



Smart Grid



Smart Cities



Smart Transportation



Renewables



Utilities



Smart Healthcare



Business Internet

Used worldwide. Proven worldwide.



Canada

Management of
Hydropower Station



Germany

Smart
EV Charging Kiosks



China

Predictive Maintenance
of Air Compressors



US

Predictive Maintenance
of Generators



Switzerland

Predictive Maintenance
of Textile Machines



Thailand

Flood Early Warning



Australia

Wireless Water Metering